

# LCN ILLUSTRATED PARTS LIST "Introduction"

## How to Use the LCN Parts List

The *LCN Illustrated Parts List* is designed to help technical service or maintenance personnel correctly identify parts that may be required to return an LCN closer to service.

## Parts List Organization

The *LCN Illustrated Parts List* identifies replacement parts that are available through many LCN distributors. The sections, in order, are the 4000 Series, the 1000 Series, the Fire/Life Safety Series, the High Security Series, & the Power Operator Series. Closers are listed in numerical order within each section. Major components such as cylinder assemblies, covers, arm assemblies, & track assemblies are listed within each individual closer series. Many times, a complete component assembly has individual replacement parts available.

## Casting (Forging) Numbers

Many LCN parts or components have casting or forging numbers stamped or raised on the surface. An example would be the '71' or '320G' on an LCN cylinder assembly. These numbers really do not identify a particular part or component. You should follow the 'How to Order' page in the latest edition of the LCN Catalog or call LCN Customer Service for assistance.

## Additional Information

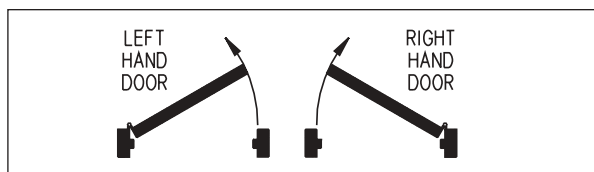
In addition to the closer series, suffix number, and short description, many parts and components require more information. Items that require more information have letters listed to the right of the description. The letter(s) are defined as follows.

**F – Finish.** Indicate the powder coat or plated finish desired. Not all parts and components are available with a plated finish. Refer to either the latest edition of the LCN Catalog

or the current LCN Price List for a standard powder coat finish chart and available plated finish designations. A bright metallic (MTLPC) finish is also available. Bright metallic is a powder coat alternative to US26D. RAL custom finishes are also available.

**S – Size.** Refers to the spring power of the closer. The larger the number, the more power the closer may have to close a door. Several closer series have an adjustable 'size 1' available. In many cases, a 'size 1' closer will meet low opening force requirements. Some 'size 1' closers are not adjustable. Please refer to the latest edition of the LCN Catalog for clarification on individual closer spring power.

**H – Hand.** Please specify either RH (Right Hand) or LH (Left Hand). The hand of a door can be determined several ways. The latest edition of the LCN Catalog has an easy to use diagram that may be utilized as a reference.



**V – Voltage.** Some parts and components require voltage. Please specify either 24v or 120v.

## Part and Component Pricing

Prices for parts and components listed with the *LCN Illustrated Parts List* can be found in the current LCN Price List. The Price List contains basic ordering & product information.

# LCN ILLUSTRATED PARTS LIST "Introduction"

## How to Order

1. Identify the closer series; 4110, 4040, 1460, 1520, 2030, 3130, 4310ME, etc.
2. Refer to the page(s) illustrating the service parts available for the specific closer and select the part required by using the closer series and the suffix.
3. Check to the right of the part description. If additional information is required, please provide it.
4. Order the parts required using the closer series, suffix number, finish, size, hand, and/or voltage.

## Part or Component Identification

If the part you require is not shown in the *LCN Illustrated Parts List*, it may be obsolete. Contact your distributor, your local Security & Safety Consultants office or LCN Customer Service.

## Ordering Examples

Here are a few examples of what an item may look like as it is ordered. Please refer to the 'How to Order' page at the end of each individual closer series within the LCN Catalog.

2310ME-3351 x On/Off Switch x 24v  
4040SE-3038 x Track x AL x 120v  
4020T-72MC x Metal Cover x RH x AL  
4313ME-3971 x Cylinder x LH x AL x 24v  
3130-3054 Hold Open Clip  
4040-62PA x Parallel Arm Shoe x DKBRZ  
4010-18 Plate x AL  
1520-3077SCNS Arm x BRASS  
2030-169 Bumper Assembly  
4640-3462 Controller Assembly  
7910-956 Actuator  
SEM7850-825 Door Armature Only

## Trademarks

List of trademarks that may appear in the *LCN Illustrated Parts List*. This list includes but is not limited to the following:

Cush-n-Stop®	Equalizer®
Pacer®	Quest®
Sentronic®	Shield and Device®
Smoothee®	Thriftee®
Super Stock®	Super Smoothee®

## Additional Assistance

If any additional assistance is needed, call LCN at (800) 526-2400. Our Customer Service or Technical Support Team will do their very best to offer door control solutions on any of the products listed within the *LCN Illustrated Parts List*.

## Please note....

Every effort has been made to insure the accuracy of the *LCN Illustrated Parts List*. If an error does exist, please contact LCN Customer Service. Errors and omissions will be incorporated into the next edition of the *LCN Illustrated Parts List*. Illustrations are designed to show general shape and size of a part and the relationship that part has to other parts. Actual size and shape of parts or components may differ or vary from the actual part or component that is shipped. LCN offers this information as a reference only. All information is subject to change without notice from LCN. If any additional information is needed, please call LCN Customer Service or Technical Support at (800) 526-2400. You may also visit LCN on the web at [www.lcnclosers.com](http://www.lcnclosers.com).

# LCN ILLUSTRATED PARTS LIST "Table of Contents"

GENERAL SECTION	PAGE
Introduction.....	1-2
Table of Contents.....	3

4000 SERIES SURFACE MOUNTED CLOSERS	
4010 .....	1
4010T .....	5
4020 .....	9
4020T .....	13
4030 .....	17
4040 .....	19
4040T .....	27
4110 .....	31
4110T .....	37
4130 .....	41
4000T .....	45

1000 SERIES SURFACE MOUNTED CLOSERS	
1070 .....	1
1370 .....	5
1460 .....	9
1460T .....	17
1520 .....	21
1520T .....	27

CONCEALED CLOSERS	PAGE
330 .....	1
2010 .....	3
2030 .....	5
3030 .....	7
3130 .....	9
5010 .....	11
5030 .....	13
6030 .....	17

FIRE/LIFE SAFETY CLOSER/HOLDERS	PAGE
7800SEM .....	1
3130SE .....	3
4040SE .....	5
2310ME .....	9
4310ME .....	11
4410ME .....	13
4310HSA .....	15
4410HSA .....	17
SEH.....	19

HIGH SECURITY CLOSERS	
2210 .....	1
2210DPS.....	3
4210 .....	5
4210T .....	7
4510 .....	9
4510T .....	11

POWER OPERATORS	
2610 Pneumatic .....	1
4630 Electric .....	3
4640 Electric .....	5
4810 Pneumatic .....	7
4820 Pneumatic .....	9
4840 Pneumatic .....	11
7900 Control Boxes & Accessories.....	15-28

Please specify finish (F), size (S), hand (H), & voltage (V) where indicated. See the latest edition of the LCN Catalog for part descriptions and specifications on many of the items shown above. List prices for items shown above can be located in the current LCN Price List.

# LCN ILLUSTRATED PARTS LIST

Please specify finish **(F)**, size **(S)**, hand **(H)**, & voltage **(V)** where indicated. See the latest edition of the LCN Catalog for part descriptions and specifications on many of the items shown above. List prices for items shown above can be located in the current LCN Price List.

# LCN 2210 SERIES

## Cylinder Assemblies

2211(3-5)-3071	Cylinder Assembly	F, S, H
	<i>Includes cylinder mounting/finish plate</i>	
	<i>'TORX' screw pack standard</i>	
	<i>Cylinder assembly is size specific (Size 1 is not adjustable)</i>	
	<i>(Sizes 3, 4, &amp; 5 are field adjustable from size 3 through size 5. Factory adjusts the spring power to the size specified.)</i>	
2211(3-5)-3071AVB	Cylinder Assembly w/ AVB	F, S, H
	<i>Includes cylinder mounting/finish plate</i>	
	<i>'TORX' screw pack standard</i>	
	<i>Cylinder assembly is size specific (Size 1 is not adjustable)</i>	
	<i>(Sizes 3, 4, &amp; 5 are field adjustable from size 3 through size 5. Factory adjusts the spring power to the size specified.)</i>	

## Individual Cylinder Parts

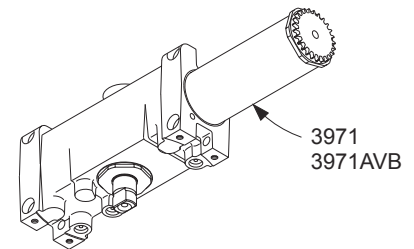
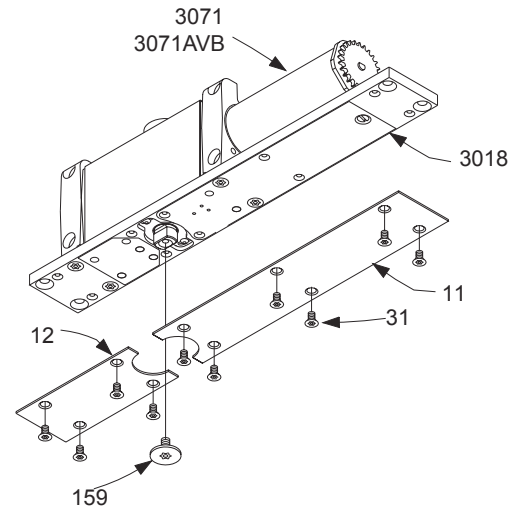
2211(3-5)-3971	Cylinder Only	F, S, H
	<i>Cylinder assembly is size specific (Size 1 is not adjustable)</i>	
	<i>(Sizes 3, 4, &amp; 5 are field adjustable from size 3 through size 5. Factory adjusts the spring power to the size specified.)</i>	
2211(3-5)-3971AVB	Cylinder Only	F, S, H
	<i>Cylinder assembly is size specific (Size 1 is not adjustable)</i>	
	<i>(Sizes 3, 4, &amp; 5 are field adjustable from size 3 through size 5. Factory adjusts the spring power to the size specified.)</i>	
2210-159	Arm Screw	F
	<i>Requires TORX bit (T-27)</i>	
2210-3018	Mounting Plate Assembly	F

## Finish Plate Assemblies

2210-72	Finish Plate Set	F
	<i>Includes 2210-11, -12, &amp; -31 (10)</i>	

## Individual Finish Plate Parts

2210-11	Long Finish Plate	F
	<i>Includes 2210-31 (6)</i>	
2210-12	Short Finish Plate	F
	<i>Includes 2210-31 (4)</i>	
2210-31	Finish Plate Screw	F
	<i>Requires TORX bit (T-15)</i>	



Please specify finish (F), size (S), hand (H), & voltage (V) where indicated. See the latest edition of the LCN Catalog for part descriptions and specifications on many of the items shown above. List prices for items shown above can be located in the current LCN Price List.

# LCN 2210 SERIES

## Complete Arm Assemblies

2210-3077T Standard Arm F, H  
*Includes 2210-159 & -3034*  
*Requires TORX bit (T-27)*

## Individual Arm Parts

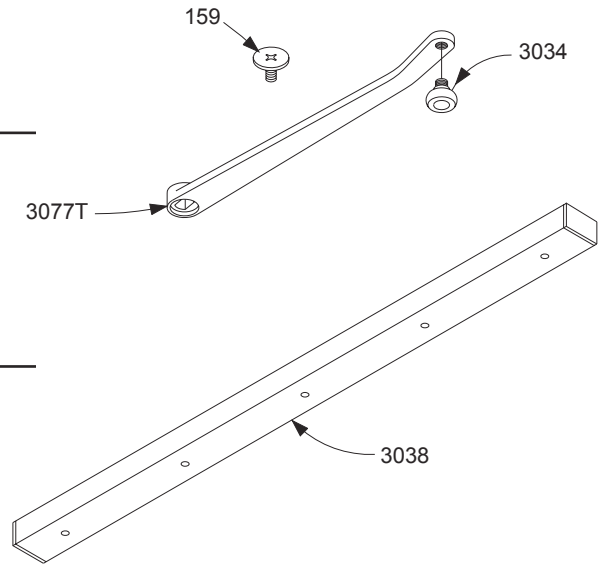
Individual arm parts for 2210-3077T

2210-159 Arm Screw F  
*Requires TORX bit (T-27)*

2210-3034 Track Roller  
*Special 'High Security' threaded roller*

## Complete Track Assemblies

2210-3038 Standard Track F  
*Requires TORX bit (T-27)*

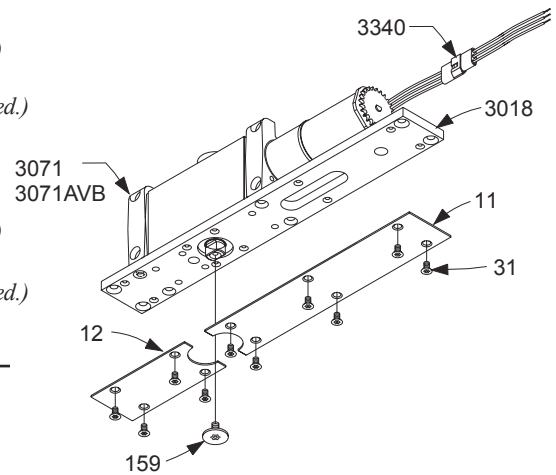


Please specify finish (**F**), size (**S**), hand (**H**), & voltage (**V**) where indicated. See the latest edition of the LCN Catalog for part descriptions and specifications on many of the items shown above. List prices for items shown above can be located in the current LCN Price List.

# LCN 2210DPS SERIES

## Cylinder Assemblies

2211(3-5)DPS-3071	Cylinder Assembly w/DPS	F, S, H
	<i>Includes cylinder mounting/finish plate</i>	
	<i>'TORX' screw pack standard</i>	
	<i>Cylinder assembly is size specific (Size 1 is not adjustable)</i>	
	<i>(Sizes 3, 4, &amp; 5 are field adjustable from size 3 through size 5. Factory adjusts the spring power to the size specified.)</i>	
2211(3-5)DPS-3071AVB	Cylinder Assy w/DPS & AVB	F, S, H
	<i>Includes cylinder mounting/finish plate</i>	
	<i>'TORX' screw pack standard</i>	
	<i>Cylinder assembly is size specific (Size 1 is not adjustable)</i>	
	<i>(Sizes 3, 4, &amp; 5 are field adjustable from size 3 through size 5. Factory adjusts the spring power to the size specified.)</i>	



## Individual Cylinder Parts

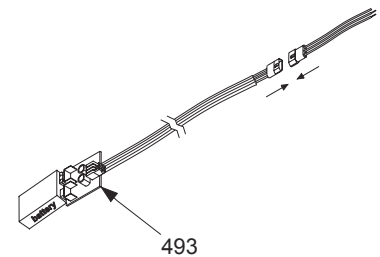
2210DPS-159	Arm Screw	F
	<i>Requires TORX bit (T-27)</i>	
2210DPS-493	DPS Test Kit	
2210DPS-3018	Mounting Plate Assembly	F
2210DPS-3340	Wire Harness	

## Finish Plate Assemblies

2210DPS-72	Finish Plate Set	F
	<i>Includes 2210DPS-11, -12, &amp; -31 (10)</i>	

## Individual Finish Plate Parts

2210DPS-11	Long Finish Plate	F
	<i>Includes 2210DPS-31 (6)</i>	
2210DPS-12	Short Finish Plate	F
	<i>Includes 2210DPS-31 (4)</i>	
2210DPS-31	Finish Plate Screw	F
	<i>Requires TORX bit (T-15)</i>	



Please specify finish (F), size (S), hand (H), & voltage (V) where indicated. See the latest edition of the LCN Catalog for part descriptions and specifications on many of the items shown above. List prices for items shown above can be located in the current LCN Price List.

# LCN 2210DPS SERIES

## Complete Arm Assemblies

2210DPS-3077T      Standard Arm      F, H  
*Includes 2210DPS-159 & -3034*  
*Requires TORX bit (T-27)*

## Individual Arm Parts

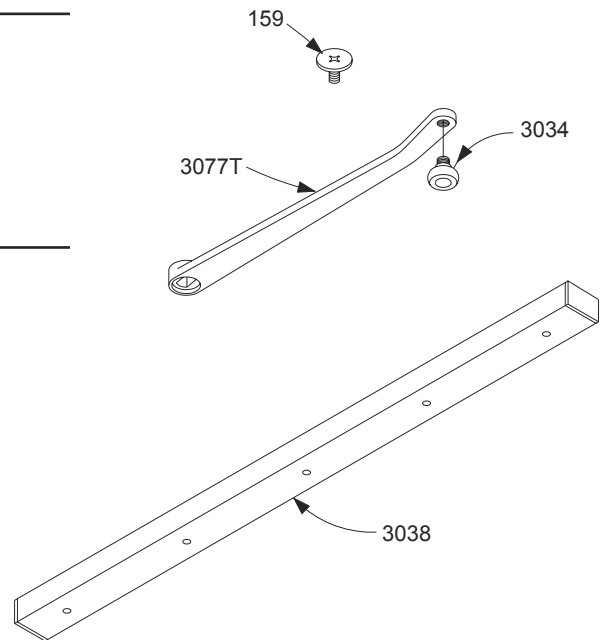
Individual arm parts for 2210DPS-3077T

2210DPS-159      Arm Screw      F  
*Requires TORX bit (T-27)*

2210DPS-3034      Track Roller  
*Special "High Security" threaded roller*

## Complete Track Assemblies

2210DPS-3038      Standard Track      F  
*Requires TORX bit (T-27)*



Please specify finish (**F**), size (**S**), hand (**H**), & voltage (**V**) where indicated. See the latest edition of the LCN Catalog for part descriptions and specifications on many of the items shown above. List prices for items shown above can be located in the current LCN Price List.



# LCN 4210 SERIES

## Cylinder Assemblies

4211(2-6)-3071	Cylinder Assembly <i>Includes TORX screw pack</i> <i>Size '1' cylinder is adjustable from size 1-5</i>	F, S, H
4211(2-6)-3071AVB	Cylinder Assembly w/AVB <i>Includes TORX screw pack</i> <i>Size '1' cylinder is adjustable from size 1-5</i>	F, S, H
4211(2-4)-3071DEL	Cylinder Assembly w/Delay <i>Includes TORX screw pack</i> <i>Size '1' cylinder is adjustable from size 1-4</i>	F, S, H

## Individual Cylinder Parts

Individual cylinder parts for 4210-3071

4210-159	Arm Screw <i>Requires TORX bit (T-27)</i>	F
----------	--	---

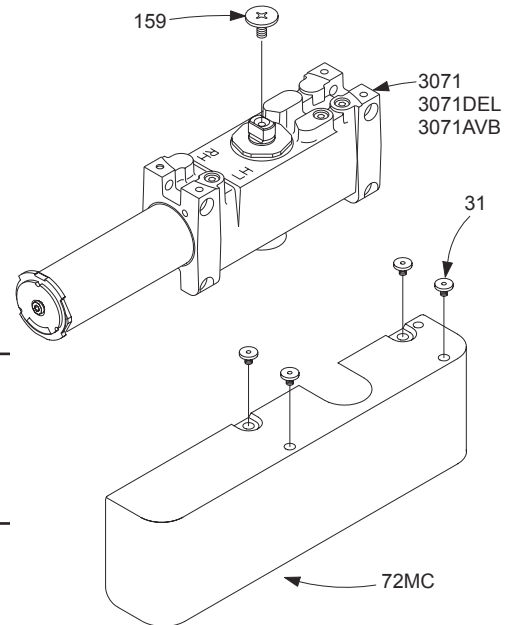
## Covers

4210-72MC	Metal Cover <i>Includes 4210-31 (4)</i>	F, H
-----------	--	------

## Individual Cover Parts

Individual cover parts for 4210-72MC

4210-31	Cover Screw <i>Requires TORX bit (T-25)</i>	F
---------	--	---

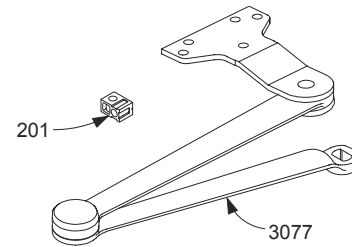


Please specify finish (**F**), size (**S**), hand (**H**), & voltage (**V**) where indicated. See the latest edition of the LCN Catalog for part descriptions and specifications on many of the items shown above. List prices for items shown above can be located in the current LCN Price List.

# LCN4210 SERIES

## Complete Arm Assemblies

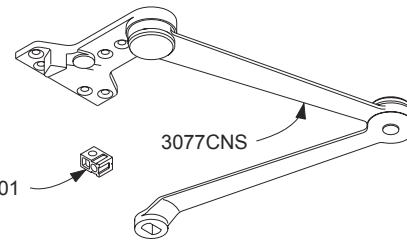
4210-3077EDA	Extra Duty Arm <i>Includes 4210 -159, &amp; -201</i>	F
4210-3077CNS	Cush-n-Stop Arm <i>Includes 4210 -159, &amp; -201</i>	F, H
4210-3049CNS	Hold-Open Cush-n-Stop Arm <i>Includes 4210 -159, &amp; -201</i>	F, H



## Individual Arm Parts

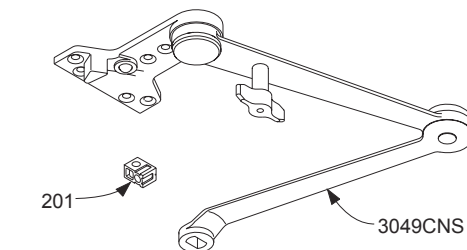
Individual arm parts for 4210-3077EDA

4210-159	Arm Screw <i>Requires TORX bit (T-27)</i>	F
4210-201	Fifth Screw Spacer	



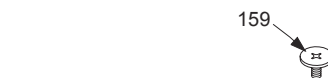
## Mounting Plates

4210-18	Mounting Plate	F
4210-18CUSH	Mounting Plate	F

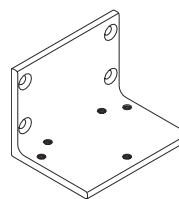
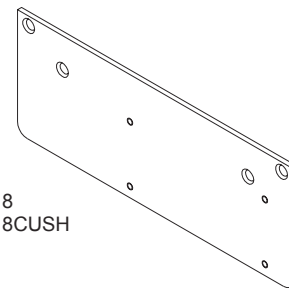


## Installation Accessories

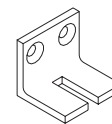
4210-30	Cush Shoe Support	F
4210-61	Blade Stop Spacer	F
4210-419	Flush Panel Adapter	F



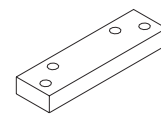
18  
18CUSH



419



30



61

Please specify finish (F), size (S), hand (H), & voltage (V) where indicated. See the latest edition of the LCN Catalog for part descriptions and specifications on many of the items shown above. List prices for items shown above can be located in the current LCN Price List.

# LCN 4210T SERIES

## Cylinder Assemblies

4211(3-4)T-3071	Cylinder Assembly <i>Includes TORX screw pack</i> <i>Cylinder assembly is size specific (not adjustable)</i>	F, S, H
4211(3-4)T-3071AVB	Cylinder Assembly w/AVB <i>Includes TORX screw pack</i> <i>Cylinder assembly is size specific (not adjustable)</i>	F, S, H

## Individual Cylinder Parts

Individual cylinder parts for 4210T-3071

4210T-159	Arm Screw <i>Requires TORX bit (T-27)</i>	F
-----------	--	---

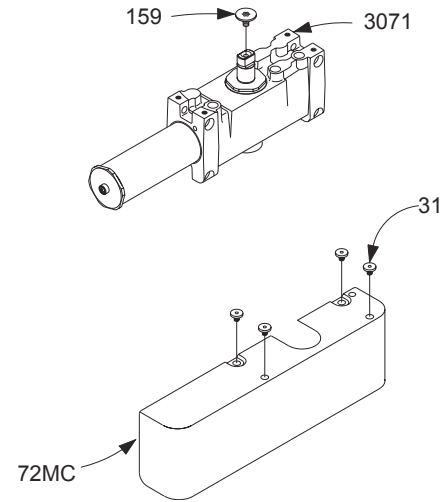
## Covers

4210T-72MC	Metal Cover <i>Includes 4210T-31 (4)</i>	F, H
------------	---	------

## Individual Cover Parts

Individual cover parts for 4210T-72MC

4210T-31	Cover Screw	F
----------	-------------	---



Please specify finish (**F**), size (**S**), hand (**H**), & voltage (**V**) where indicated. See the latest edition of the LCN Catalog for part descriptions and specifications on many of the items shown above. List prices for items shown above can be located in the current LCN Price List.

# LCN4210T SERIES

## Complete Arm

### Assemblies

4210T-3077T	Standard Arm	F, H
	<i>Includes 4210T-159, &amp; -3034</i>	

### Individual Arm Parts

Individual arm parts for 4210T-3077T

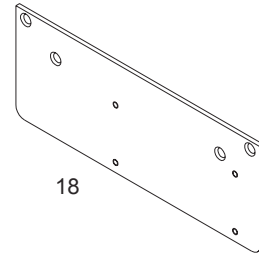
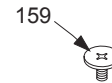
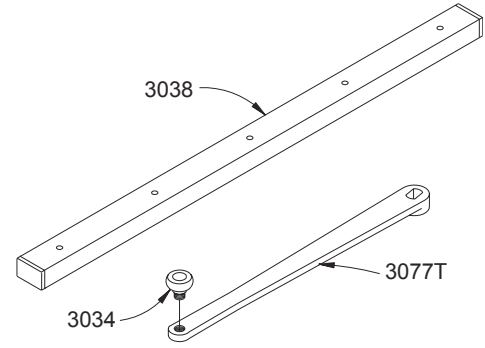
4210T-159	Arm Screw	F
	<i>Requires TORX bit (T-27)</i>	
4210T-3034	Track Roller	
	<i>Special "High Security" threaded roller</i>	

### Complete Track Assemblies

4210T-3038	Standard Track	F
------------	----------------	---

### Mounting Plate

4210T-18	Mounting Plate	F
----------	----------------	---



Please specify finish (**F**), size (**S**), hand (**H**), & voltage (**V**) where indicated. See the latest edition of the LCN Catalog for part descriptions and specifications on many of the items shown above. List prices for items shown above can be located in the current LCN Price List.

# LCN4510 SERIES

## Cylinder Assemblies

4511(2-6)-3071	Cylinder Assembly	F, S, H
	<i>Includes TORX screw pack</i>	
	<i>Size '1' cylinder is adjustable from size 1-5</i>	
4511(2-6)-3071AVB	Cylinder Assembly w/AVB	F, S, H
	<i>Includes TORX screw pack</i>	
	<i>Size '1' cylinder is adjustable from size 1-5</i>	
4511(2-5)-3071DEL	Cylinder Assembly w/Delay	F, S, H
	<i>Includes TORX screw pack</i>	
	<i>Size '1' cylinder is adjustable from size 1-5</i>	

## Individual Cylinder Parts

Individual cylinder parts for 4510-3071

4510-159	Arm Screw	F
	<i>Requires TORX bit (T-27)</i>	

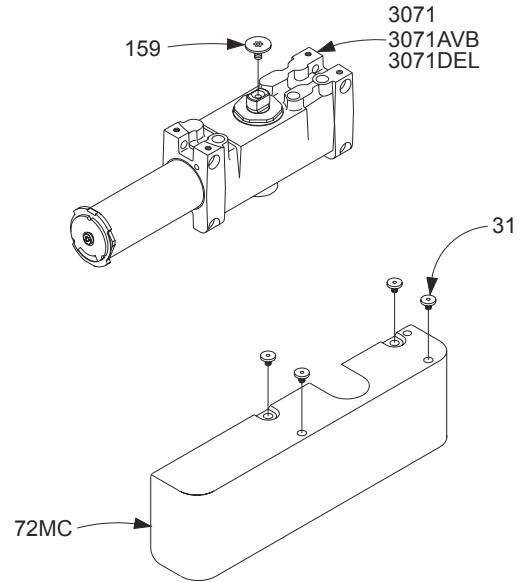
## Covers

4510-72MC	Metal Cover	F, H
	<i>Includes 4510-31 (4)</i>	

## Individual Cover Parts

Individual cover parts for 4510-72MC

4510-31	Cover Screw	F
	<i>Requires TORX bit (T-25)</i>	



Please specify finish (**F**), size (**S**), hand (**H**), & voltage (**V**) where indicated. See the latest edition of the LCN Catalog for part descriptions and specifications on many of the items shown above. List prices for items shown above can be located in the current LCN Price List.

# LCN4510 SERIES

## Complete Arm Assemblies

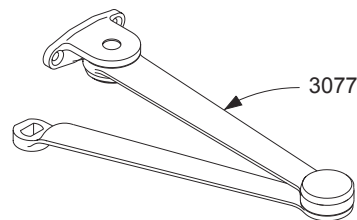
4510-3077EDA	Extra Duty Arm	F
	<i>Includes 4510-159</i>	

## Individual Arm Parts

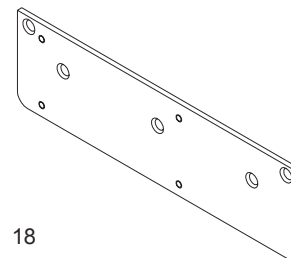
Individual arm parts for 4510-3077		
4510-159	Arm Screw	F
	<i>Requires TORX bit (T-27)</i>	

## Mounting Plates

4510-18	Mounting Plate	F
---------	----------------	---



159 → 



18

Please specify finish (**F**), size (**S**), hand (**H**), & voltage (**V**) where indicated. See the latest edition of the LCN Catalog for part descriptions and specifications on many of the items shown above. List prices for items shown above can be located in the current LCN Price List.

# LCN 4510T SERIES

## Cylinder Assemblies

4511(3-4)T-3071	Cylinder Assembly <i>Includes TORX screw pack</i> <i>Cylinder assembly is size specific (not adjustable)</i>	F, S, H
4511(3-4)T-3071AVB	Cylinder Assembly w/AVB <i>Includes TORX screw pack</i> <i>Cylinder assembly is size specific (not adjustable)</i>	F, S, H

## Individual Cylinder Parts

Individual cylinder parts for 4510T-3071

4510T-159	Arm Screw <i>Requires TORX bit (T-27)</i>	F
-----------	--	---

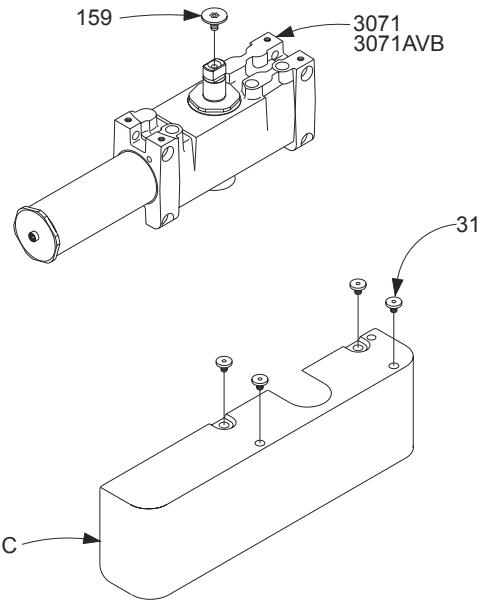
## Covers

4510T-72MC	Metal Cover <i>Includes 4510-31 (2)</i>	F, H
------------	--	------

## Individual Cover Parts

Individual cover parts for 4510T-72MC

4510T-31	Cover Screw <i>Requires TORX bit (T-25)</i>	F
----------	--	---



Please specify finish (**F**), size (**S**), hand (**H**), & voltage (**V**) where indicated. See the latest edition of the LCN Catalog for part descriptions and specifications on many of the items shown above. List prices for items shown above can be located in the current LCN Price List.

# LCN 4510T SERIES

## Complete Arm Assemblies

4510T-3077T      Standard Arm      F, H  
*Includes 4510T-159 & -3034*

## Individual Arm Parts

Individual arm parts for 4510T-3071

4510T-159      Arm Screw      F  
*Requires TORX bit (T-27)*

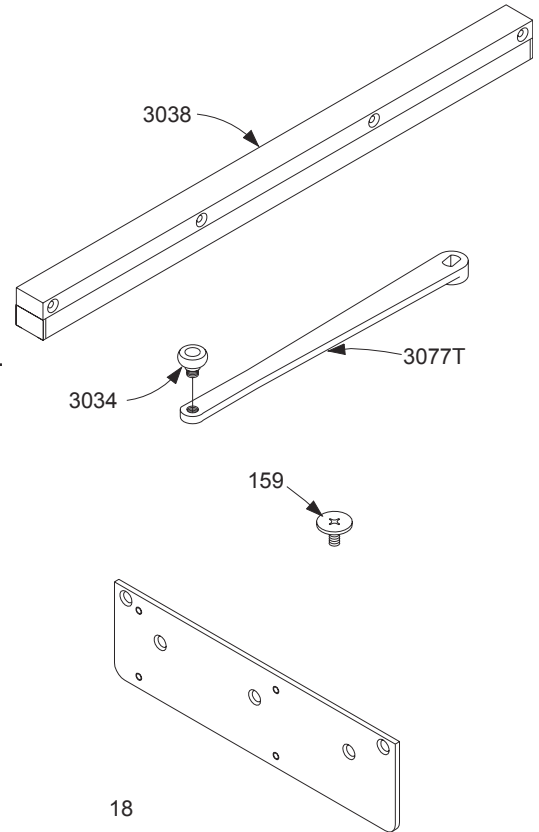
4510T-3034      Track Roller  
*Special "High Security" threaded roller*

## Complete Track Assemblies

4510T-3038      Standard Track      F

## Mounting Plate

4510T-18      Mounting Plate      F



Please specify finish (**F**), size (**S**), hand (**H**), & voltage (**V**) where indicated. See the latest edition of the LCN Catalog for part descriptions and specifications on many of the items shown above. List prices for items shown above can be located in the current LCN Price List.